

FEBRUARY – MARCH 2025

*THERE ARE SO MANY LIVES I WANT TO SHARE WITH YOU*




# THE LAST FIVE YEARS

THE  
**FIFTH AVENUE**  
THEATRE



**FEBRUARY 8 -  
MARCH 16, 2025**

encore



**Bischofberger**  
*Violins* est. 1955

Professional  
 Repairs  
 Appraisals  
 & Sales

1314 E. John St.  
 Seattle, WA  
 206-324-3119  
[bviolinsltd.com](http://bviolinsltd.com)

**Senior Living.  
 Seattle Style.**




MIRABELLA

116 Fairview Ave N  
 206.330.0224  
[mirabellaseattle.org](http://mirabellaseattle.org)

Mirabella Seattle is a resident-centered,  
 not-for-profit Pacific Retirement Services community  
 and an equal housing opportunity.

# encore

2024/25 | Volume 21, No. 2



To access this program on your phone,  
 scan the QR code above.

PAUL HEPPNER  
*President & Publisher*

BRIEANNA HANSEN  
*Vice President of Sales*

SHAUN SWICK  
*Brand & Creative Manager*

CIARA CAYA  
*Marketing & Communications Manager*

GENAY GENEREUX  
*Accounting & Office Manager*

CALEB AGEE  
*Design & Publications Manager*

LIZELLE DIN  
*Production Designer*

NINA ANTIC  
*Account Executive*

MARILYN KALLINS  
*Bay Area Representative*

LYLE LAVER  
*Regional Sales Representative*

**Encore Media Group**  
 1631 15th Ave W.  
 Suite 219  
 Seattle, WA 98119-2796  
 206.443.0445  
[info@encoremediagroup.com](mailto:info@encoremediagroup.com)  
[encoremediagroup.com](http://encoremediagroup.com)

**Encore—Connecting Arts, Culture and Community.**

# CONTENTS

- 4 Letter from Leadership
- 6 Cast & Orchestra
- 7 Musical Numbers
- 9 Who's Who
- 17 The 5th Avenue Theatre Supporters
- 22 ACT Supporters
- 26 ACT Board of Trustees
- 28 ACT Staff
- 29 The 5th Avenue Theatre Board of Directors
- 30 The 5th Avenue Theatre Staff

## LAND ACKNOWLEDGEMENT

ACT and The 5th Avenue Theatre acknowledge that the land on which this theatre stands on is the ancestral homelands of the **Muckleshoot, Suquamish, Duwamish, Snoqualmie** and **Tulalip** peoples, along the waterways of the **Salish Sea**. We honor the **29 federally recognized sovereign tribal nations** within the state of Washington.

As we gather and strive to share stories of our world with joy and clarity, **we honor with gratitude the original stewards and storytellers of these lands—past, present and future.** We value the immense and often unrecognized contributions, sacrifices **and resilience of Indigenous people** here, and acknowledge the profound multigenerational impact that colonization has adversely had on Native people everywhere, including ongoing disparities, racism and political and social invisibility. **To heal, we need truth and understanding that everyone actively participates in, together.**

**This land acknowledgement is one small act** in recognizing the importance of continuing to care for the land and our important relationship with the original people of this place we all call home, who are still here. **We are all in relationship to each other.**

# THE FIFTH AVENUE THEATRE

## 2024/25 SEASON

DISNEY & CAMERON MACKINTOSH'S  
MARY POPPINS

November 22 – December 29, 2024

### THE LAST FIVE YEARS

February 8 – March 16, 2025

### WAITRESS

March 11 – 30, 2025

### North American Tour of PARADE

April 16 – May 4, 2025

### BYE BYE BIRDIE

June 10 – 29, 2025

### AFTER MIDNIGHT

August 5 – 24, 2025

## PRESENTING RESTAURANT PARTNER



## 2024/25 SEASON

### POTUS

September 7 – 29, 2024

### MRS. LOMAN IS LEAVING

October 12 – 27, 2024

### THE LAST FIVE YEARS

February 8 – March 16, 2025

### GOLDEN

April 26 – May 11, 2025

### TWELFTH NIGHT

June 7 – 22, 2025

## ACT SEASON SPONSORS



# LETTER FROM LEADERSHIP

Welcome to the Theatre!



PHOTO BY MARK KITAOKA



## LOVE, IN TIMELAPSE

It is our pleasure to welcome you back for the 13th collaboration between ACT Contemporary Theatre and The 5th Avenue Theatre. Each year, we look forward to bringing our audiences together to experience a moving musical that we know our collective audiences will enjoy. And each year, we try to dream bigger and create something together that we could not achieve on our own.

*The Last Five Years* by Jason Robert Brown has been a co-production contender for many years. We are thrilled that our production is coming to life just as the show is about to get its due on Broadway in a new staging. Brown delivers a unique and novel format that upends the narrative structure of a traditional love story. *The Last Five Years* premiered in Chicago in 2001 and immediately garnered attention: here was a story that slowly revealed itself in both forward and reverse, as two lives intersected, intertwined, and then separated once more. *The Last Five Years* speaks to something about love that transcends language and culture. It has been produced all over Europe, in Brazil, New Zealand, Singapore, and the Philippines, with stagings ranging from a single-room apartment to grand opera houses and a major motion picture. Now we gather in the intimate Allen Theatre to connect with these two characters through the universal experience of love and loss.

Thank you for choosing to spend your time with us today, and for supporting the Seattle performing arts. Without you, none of this is possible.

Bill Berry  
Executive Director  
The 5th Avenue Theatre

Elisabeth Farwell-Moreland  
Interim Producing Artistic Director  
ACT Contemporary Theatre



**THE 5TH AVENUE THEATRE**

Executive Director  
BILL BERRY

AND

**ACT CONTEMPORARY THEATRE**

Interim Producing Artistic Director  
ELISABETH FARWELL-MORELAND

PRESENT

# THE LAST FIVE YEARS

Written and Composed by  
**JASON ROBERT BROWN**

Originally Produced for the New York stage by  
**ARIELLE TEPPER AND MARTY BELL**

Originally Produced by Northlight Theatre  
Chicago IL

Featuring

**COLEMAN  
CUMMINGS**

Scenic Designer  
JULIA HAYES WELCH

Associate Director &  
Casting Director  
BRODRICK SANTEZE RYANS

Intimacy Director  
JASMINE LOMAX

**KEOLA  
KAPULANI HOLT**

Costume Designer  
TY PYNE

Associate Music Director  
MICHAEL NUTTING

Directing Advisor  
TIMOTHY MCCUEN PIGGEE

**CASSI Q  
KOHL**

Lighting Designer  
ANDREW D. SMITH

Assistant Lighting Designer  
CASEY PRICE

Music Director  
R.J. TANCIOCO

Director & Musical Staging  
SHERMONA MITCHELL

**JEFFERY  
WALLACE**

Sound Designer  
HALEY PARCHER

Production Stage Manager  
JEFFREY K. HANSON

Associate Sound Designer  
KURT CONWAY

---

**THE 5TH AVENUE THEATRE PRODUCING PARTNER**  
Marleen and Kenny Alhadeff

STARTING AT \$123

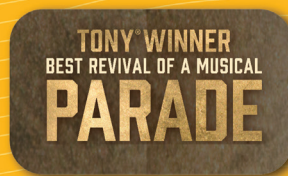
# Three-Show Subscriptions Now On Sale

Mix and match your favorite titles to make the perfect subscription for you.

## THE BROADWAY SAMPLER



## THE SHOWSTOPPER SAMPLER



## THE VARIETY SAMPLER



Subscribe today at  
**5THAVENUE.ORG** or call **206.625.1900**

# CAST

Jamie Wellerstein ..... COLEMAN CUMMINGS

Cathy Hiatt ..... KEOLA KAPULANI HOLT

Cathy Hiatt ..... CASSI Q KOHL

Jamie Wellerstein ..... JEFFERY WALLACE

## **KEOLA KAPULANI HOLT and COLEMAN CUMMINGS**

FEB 8, 9, 14, 15, 20, 21, 23 eve, 26, 27 mat, MAR 1 eve, 2, 7, 8, 13, 14, 16 eve

## **CASSI Q KOHL and JEFFERY WALLACE**

FEB 11, 12, 13, 16, 19, 22, 23 mat, 27, 28, MAR 1 mat, 5, 6, 9, 12, 15, 16 mat

## **STAGE MANAGEMENT**

Production Stage Manager  
JEFFREY K. HANSON

Assistant Stage Manager  
ISABELLA MARZIELLO



The actors and stage managers are members of Actors Equity Association, the Union of Professional Actors and Stage Managers in the United States.

# ORCHESTRA

Conductor/Piano ..... R.J. TANCIOCO or MICHAEL NUTTING

Violin .....KIMBERLY HARRENSTEIN

Cello 1 .....GRANT OLSON

Cello 2 .....VIRGINIA DZIEKONSKI

Guitar .....ANTHONY POOLEY

Bass ..... OLIVIA HAMILTON

---

*The Last Five Years* is presented through special arrangement with Music Theatre International (MTI).  
All authorized performance materials are also supplied by MTI.  
[www.mtishows.com](http://www.mtishows.com)

# MUSICAL NUMBERS

"Still Hurting"	Cathy
"Shiksa Goddess"	Jamie
"See I'm Smiling"	Cathy
"Moving Too Fast"	Jamie
"A Part of That"	Cathy
"The Schmu-el Song"	Jamie
"A Summer in Ohio"	Cathy
"The Next Ten Minutes"	Cathy, Jamie
"A Miracle Would Happen/When You Come Home to Me"	Cathy, Jamie
"Climbing Uphill"	Cathy
"If I Didn't Believe in You"	Jamie
"I Can Do Better Than That"	Cathy
"Nobody Needs to Know"	Jamie
"Goodbye Until Tomorrow/I Could Never Rescue You"	Cathy, Jamie

The videotaping or making of electronic or other audio and/or visual recordings or streams in any medium, including the internet, is strictly prohibited, a violation of the author(s)'s rights and actionable under United States copyright law.



## ATTEND DRAMATURGY FUNDAMENTALS

Available for ages 14-25. Dramaturgy Fundamentals is a foundational workshop series that provides participants with the opportunity to learn the basics of dramaturgy and gain insight to many of the dramaturgical initiatives at The 5th.



Scan the QR code to learn more and register.

## JOIN US FOR SHOW TALKS



Now on Monday evenings! Show Talks further explore a topic or theme of a show to help you on your journey to be fully immersed in the show. Enjoy performances, discussions, light bites, and giveaways, while being out in the community!



Scan the QR code to learn more and register.

If you have any questions about our programming, email [educationprograms@5thavenue.org](mailto:educationprograms@5thavenue.org) to learn more.

# WHO'S WHO



## COLEMAN CUMMINGS

they/he (*Jamie Wellerstein*) could not be more honored to be trusted to bring this character to life, and to be working with such an incredible team. They were last seen at The 5th as

Prince Eric in *The Little Mermaid* and as Emmett in *Legally Blonde* at Village Theatre. Notable Credits: Roger (*Rent* - National Tour), Dmitry (*Anastasia* - Regional Premiere) Taylor (*Shooting Star* - Off Broadway), and Chip (*The 25th Annual...Spelling Bee* - George Street). A huge thanks to everyone involved in making this dream show possible! @colemancumming



## KEOLA KAPULANI HOLT

they/she (*Cathy Hiatt*) is beyond grateful to be living this dream and telling this story. They are a Seattle-based dancer, actor, singer, and multi-instrumentalist. They are honored to

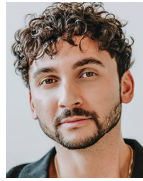
represent their community as a neurodivergent performer! Previous credits at The 5th include *Mary Poppins* (Swing) and Educational Touring Company: *Northwest Bookshelf* (Narwhal). Other favorite credits include *Cinderella* (Village Theatre) and *The Hello Girls* (Taproot Theatre). Gratitude to my Ohana. Mahalo nui loa. @keola\_kapulani



## CASSI Q KOHL

she/her (*Cathy Hiatt*) hails from Portland, where she fell in love with this show as a teenager. She is now thrilled to share it amongst her favorite people here in Seattle! You may recognize

Cassi as the knife-sliding Bernadette from *POTUS* here at ACT Contemporary Theatre, and other favorites include: *The Little Mermaid* (The 5th), *Cinderella* (Village Theatre), and *Hello Girls* (Taproot Theatre). Love to her fiancée Amanda for always setting out her favorite breakfast. @thunderdyke



## JEFFERY WALLACE

he/him (*Jamie Wellerstein*) is so honored and ecstatic to be making his debut with The 5th Avenue Theatre and ACT Contemporary Theatre. Theatre credits: Village Theatre's *Legally Blonde*;

*Once on This Island*; *Beautiful: The Carole King Musical* and *Hello, Dolly!*. MST's *All Shook Up*; *Peter and the Starcatcher* and more. Off stage, Jeff is an interior designer, set designer, and costumer. He is blessed to share his God-given gifts and for the love and support of his incredible family and friends. @JBrianjr\_

## JASON ROBERT BROWN

(*Book, Music and Lyrics*) is the ultimate multi-hyphenate - an equally skilled composer, lyricist, conductor, arranger, orchestrator, director and performer - best known for his dazzling scores to several of the most renowned musicals of our time, including the generation-defining *The Last Five Years*, his debut song cycle *Songs for a New World*, and the seminal *Parade*, for which he won the 1999 Tony Award® for Best Score. Jason Robert Brown has been hailed as "one of Broadway's smartest and most sophisticated songwriters since Stephen Sondheim" (*Philadelphia Inquirer*), and his "extraordinary, jubilant theater music" (*Chicago Tribune*) has been heard all over the world, whether in one of the hundreds of productions of his musicals every year or in his own incendiary live performances. *The New York Times* refers to Jason as "a leading member of a new generation of composers who embody high hopes for the American musical." Jason's score for *The Bridges of Madison County*, a musical adapted with Marsha Norman from the bestselling novel, received two Tony Awards® (for Best Score and Orchestrations). *Honeymoon In Vegas*, based on Andrew Bergman's film, opened on Broadway in 2015 following a triumphant production at Paper Mill Playhouse. A film version of his epochal Off-Broadway musical *The Last Five Years* was released in 2015, starring Anna Kendrick and Jeremy Jordan and directed by Richard LaGravenese. His major musicals as composer and lyricist include: *13*, written with Robert Horn and Dan Elish, which opened on Broadway in



2008 and was subsequently directed by the composer for its West End premiere in 2012; *The Last Five Years*, which was cited as one of *Time Magazine's* 10 Best of 2001 and won Drama Desk Awards for Best Music and Best Lyrics (and was later directed by the composer in its record-breaking Off-Broadway run at Second Stage Theatre in 2013); *Parade*, written with Alfred Uhry and directed by Harold Prince, which won both the Drama Desk and New York Drama Critics' Circle Awards for Best New Musical, as well as garnering Jason the Tony Award® for Original Score; and *Songs for a New World*, a theatrical song cycle directed by Daisy Prince, which has since been seen in hundreds of productions around the world since its 1995 Off-Broadway debut, including a celebrated revival at New York's City Center in the summer of 2018. *Parade* was also the subject of a major revival directed by Rob Ashford, first at London's Donmar Warehouse and then at the Mark Taper Forum in Los Angeles. Jason conducted his orchestral adaptation of E.B. White's novel *The Trumpet of the Swan* with the National Symphony Orchestra, and recorded the score for PS Classics. In 2024, the world premiere of a new chamber musical created with Daisy

Prince and Jonathan Marc Sherman called *The Connector* debuted Off-Broadway; and in 2022 *Mr. Saturday Night* premiered on Broadway, a musical collaboration with Billy Crystal, Amanda Green, Lowell Ganz, and Babaloo Mandel. Future projects include an adaptation of Lillian Lee's *Farewell My Concubine*, created with Kenneth Lin and Moises Kaufman. Jason is the winner of the 2018 Louis Auchincloss Prize, the 2002 Kleban Award for Outstanding Lyrics and the 1996 Gilman & Gonzalez-Falla Foundation Award for Musical Theatre. Jason's songs, including the cabaret standard "Stars and the Moon," have been performed and recorded by Ariana Grande, Audra McDonald, Kristin Chenoweth, Billy Porter, Betty Buckley, Renée Fleming, Jon Hendricks and many others, and his song "Someone To Fall Back On" was featured in the Walden Media film, *Bandstand*. As a soloist or with his band The Caucasian Rhythm Kings, Jason has performed concerts around the world. For the past four years (and ongoing), his monthly sold-out performances at New York's SubCulture have featured many of the music and theater world's most extraordinary performers. His newest collection, "How We React and How We Recover", was released in June 2018

## Digital programs reimagined.

Visit the all new Encore+, now with an improved user experience rebuilt from the ground up. Available from these fine performing arts organizations:

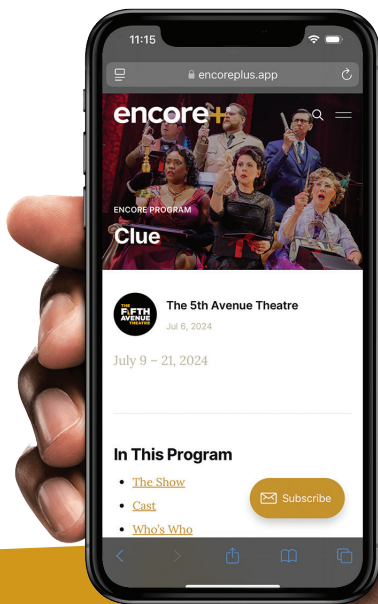
### Greater Seattle Area

The 5th Avenue Theatre, Seattle Children's Theatre, Seattle Opera, Seattle Rep, Seattle Theatre Group, Seattle Shakespeare Company, Taproot Theatre Company, Village Theatre

### San Francisco Bay Area

American Conservatory Theater, Berkeley Rep, San Francisco Opera, San Francisco Gay Men's Chorus, San Francisco Symphony

**encore+**



on Ghostlight Records. His previous solo album, "Wearing Someone Else's Clothes", was named one of Amazon.com's best of 2005, and is available from Sh-K-Boom Records. Jason's 2012 concert with Anika Noni Rose was broadcast on PBS, and he was the featured soloist for a live episode of *Friday Night Is Music Night*, broadcast from the London Palladium and featuring the BBC Concert Orchestra. His collaboration with singer Lauren Kennedy, "Songs of Jason Robert Brown", is available on PS Classics. Jason is also the composer of the incidental music for the Broadway revival of *You Can't Take It With You*, David Lindsay-Abaire's *Kimberly Akimbo* and *Fuddy Meers*, and Kenneth Lonergan's *The Waverly Gallery*, and he was a Tony Award® nominee for his contributions to the score of *Urban Cowboy the Musical*. He has also contributed music to the hit Nickelodeon television series, *The Wonder Pets* as well as *Sesame Street*. Jason spent 10 years teaching at the USC School of Dramatic Arts, and has also taught at Harvard University, Princeton University and Emerson College. For the musical *Prince of Broadway*, a celebration of the career of his mentor Harold Prince, Jason was the musical supervisor and arranger.

Other New York credits as conductor and arranger include *Urban Cowboy the Musical* on Broadway; *Dinah Was*, Off-Broadway and on national tour; *When Pigs Fly* Off-Broadway; William Finn's *A New Brain* at Lincoln Center Theater; the 1992 tribute to Stephen Sondheim at Carnegie Hall (recorded by RCA Victor); Yoko Ono's *New York Rock*, at the WPA Theatre; and Michael John LaChiusa's *The Petrified Prince* at the Public Theater. Jason orchestrated Andrew Lipka's *John and Jen*, Off-Broadway at Lamb's Theatre. Additionally, Jason served as the orchestrator and arranger of Charles Strouse and Lee Adams's score for a proposed musical of *Star Wars*. Jason has conducted and created arrangements and orchestrations for Liza Minnelli, John Pizzarelli, and Michael Feinstein, among many others. Jason studied composition at the Eastman School of Music in Rochester, NY, with Samuel Adler, Christopher Rouse, and Joseph Schwantner. He lives with his wife, composer Georgia Stitt, and their daughters in New York City. Jason is a proud member of the Dramatists Guild and the American Federation of Musicians Local 802. Visit him on the web at [jasonrobertbrown.com](http://jasonrobertbrown.com).



—THE—  
**BAR**  
AT CHIHULY  
GARDEN AND GLASS

**OPEN TO THE PUBLIC**

[chihulygardenandglass.com/bar](http://chihulygardenandglass.com/bar)

Located across from the Space Needle

# SAVE THE DATE

## *Spotlight* **SOIRÉE**

ANNUAL AUCTION & GALA

SATURDAY MAY 31, 2025 | 5:30 PM  
SHERATON GRAND SEATTLE

### YOU'RE INVITED!

Save the date to celebrate the power of musical theater at The 5th Avenue Theatre's Spotlight Soiree.

Dust off your dancing shoes and get ready to twist and shout at The 5th Avenue Theatre's party of the year!

Bring your best rockin' and retro '50s and '60s glam as we celebrate and raise funds for locally-produced live musical theater in Seattle.



Scan the QR code or  
visit [5thavenue.org/gala](https://5thavenue.org/gala)  
to learn more.



**SHERMONA MITCHELL** she/they (*Director/Musical Staging*) is an accomplished actor, director, and adaptor whose artistic journey has taken them from Kentucky to Seattle and beyond. For over two decades, she has brought compelling stories to life on stages across the Pacific Northwest, nationally in Washington, Oregon, and Pennsylvania, and internationally in Canada and Turkmenistan. Their work has been featured and celebrated at theatres such as: The 5th Avenue Theatre, ACT Contemporary Theatre, Intiman Theatre, Sound Theatre Company, Seattle Children's Theatre, Seattle Public Theater, and more. As a Co-Artistic Director of Sound Theatre Company, Shermona is committed to creating spaces where diverse stories and perspectives take center stage, championing a vision of theater that is vibrant, inclusive, and transformative.

**R.J. TANCIOCO** he/him (*Music Director*) Select musical direction credits include: *Spring Awakening*, *The Little Mermaid*, *Into the Woods*, *Beauty and the Beast*, *Urinetown*, *Mamma Mia!*, *Jasper in Deadland*, *Little Shop of Horrors*, *RENT*, *Joseph...*, *Smokey Joe's Cafe*, *Hair* (The 5th); *Beautiful: The Carole King Musical*, *Cinderella*, *..Charlie Brown*, *She Loves Me*, *In the Heights*, *Hairspray*, *Newsies*, *Dreamgirls* (Village Theatre); *The Winter's Tale*, *As You Like It*, *The Odyssey*, *Here Lies Love* (Seattle Rep); *A Christmas Carol* (ACT); *Twelfth Night* (Seattle Shakespeare); *Head Over Heels*, *Violet*, *American Idiot* (ArtsWest); *The Spitfire Grill* (Showtunes!); *Sister Act*, *Daddy Long Legs*, *Bright Star* (Taproot Theatre). A 2010 Gregory Award and 2011/2014 Gypsy Rose Lee award recipient, Tancioco is a vocal coach, arranger, and composer who enjoys educating theatre to youth and cultivating new musicals. We chase it, we lose it, but TIME is never lost, it simply moves, remain grateful for the now.

**JULIA HAYES WELCH** she/her (*Scenic Designer*) is thrilled to be back working with The 5th Avenue Theatre and ACT Contemporary Theatre, where she previously designed *POTUS*, *The Lehman Trilogy*, *Pass Over*, *Skylight*, *Alex and Aris*, and *Bad Apples*. Her local credits include Seattle Children's Theatre, Intiman Theatre, Village Theatre, Seattle Public Theater, Seattle Shakespeare, Book-It Repertory, Seattle Opera, Washington Ensemble Theatre, ArtsWest, and others. She is a recipient of the Gregory Award: People's Choice for Outstanding Designer for her work during the 2017-2018 season. She holds an

MFA from the University of Washington and is a member of USA 829. Much love to W, M & A.J. [jhwelchdesigns.com](http://jhwelchdesigns.com)

**TY PYNE** (*Costume Designer*) Originally from Las Vegas, Ty Pyne is a Filipinx costume designer and Craftsperson in Seattle. They strive to support young QTBIPOC to see themselves in all aspects of storytelling. Ty seeks to work with material that highlights and honors diverse perspective.

**ANDREW D. SMITH** (*Lighting Designer*) is a Seattle-based lighting designer, and has worked with ACT since 2014, most recently lighting *The Lehman Trilogy*, *A Christmas Carol*, and *Choir Boy*. National work includes: Arizona Theatre Company (*Native Gardens*), Indiana Repertory Theatre (*The Diary of Anne Frank*), Pittsburgh Public Theatre, Cornerstone Theatre Company, Flint Youth Theatre, Horizon Theater Company, and Cincinnati Shakespeare Company. Seattle work has been seen at Seattle Rep, Seattle Children's Theatre, Book-It, Seattle Shakespeare, New Century Theatre Company, Washington Ensemble, Azeotrope, Strawberry Theatre Workshop, Seattle Public Theatre, Theater Off Jackson, ArtsWest, On the Boards, Velocity Dance Center, and Broadway Performance Hall. Andrew holds a BA from Duke University and an MFA from the University of Washington, where he currently teaches.

**HALEY PARCHER** (*Sound Designer*) is a Seattle based sound designer. Recent credits include Broadway: *Monty Python's Spamalot*, Regional: *Annie and Something Rotten* (Stratford Festival), *Mary Poppins*, *Something's Afoot*, *Irving Berlin's White Christmas*, *Sweeney Todd*, *Into the Woods*, and *The Wiz* (The 5th Avenue Theatre), *Schmigadoon!*, *The 25th Annual Putnam County Spelling Bee*, *NINE*, *Bye Bye Birdie*, *Tick Tick...Boom!*, *Monty Python's Spamalot*, *Sunset Boulevard*, and *Guys & Dolls* (Kennedy Center), *Cabaret* (The Old Globe), *Mamma Mia!* & *Guys & Dolls* (Village Theatre), *And So That Happened* (ACT), *How Can I Love You* (Cave B), and *We've Battled Monsters Before* (ArtsWest). Love to her family.

**BRODRICK SANTEZE RYANS** he/him (*Associate Director/Casting Director*) is a Seattle-based musical theatre artist, director, and casting director, dedicated to inspiring through performance and theater education. He has worked with numerous local companies and recently served as Casting Associate and Artistic Liaison for The 5th

**DON'T MISS ACT'S 49<sup>TH</sup>  
WORLD PREMIERE!**



# GOLDEN

*WRITTEN BY*  
**ANDREW LEE CREECH**

*DIRECTED BY* **TYRONE PHILLIPS**

Morris Golden, fighting the wave of financial instability brought on by The Great Recession of 2008, reaches for answers as a mysterious change machine in his laundromat becomes an unexpected source of hope. From the mind of celebrated Seattle writer Andrew Lee Creech, and first seen at ACT's inaugural New Works Northwest festival, comes a riveting world premiere about the enduring power of hope in the face of adversity.

APRIL  
**26**

—

MAY  
**11**





Avenue Theatre. Brodrick recently directed *Brown Bodies on a Blue Earth* by Cris Eli Blak and is thrilled to join this phenomenal team. He sends heartfelt thanks to his partner, BJ, for their unwavering support.

**MICHAEL NUTTING** (*Associate Music Director*) is very excited to working on this production. Michael's favorite past shows include: *Mamma Mia!*, *Into the Woods* (The 5th), *Howard Barnes*, *String* (Village Theatre), *Urinetown*, (ACT Theatre), and *The Hello Girls* (Taproot Theatre). When not music directing, he is busy working as the Artistic Executive at NM Entertainment. Special thanks to those whose dedication and hard work are fueling this production. Love to Jerra.

**KURT CONWAY** he/him (*Associate Sound Designer*) Previous Seattle area credits include: *Legally Blonde*, *Rodgers and Hammerstein's Cinderella*, *Little Shop of Horrors*, *Songs for a New World* (Village Theatre). He also designs shows for Norwegian Cruise Lines. Originally from the mountains of North Carolina, Kurt currently works for The 5th Avenue Theatre as well as freelances as a designer and mix engineer in Seattle and internationally.

**JASMINE LOMAX** (*Intimacy Director*) is a Cornish College of the Arts Original Works graduate. Some of their favorite credits include *The Niceties* (Associate Director/ Fight Choreographer) with Intiman Theatre, *Tiara's Hat Parade* (Director) with Book-It, and *PASSOVER* (Intimacy Director/Co-Fight Choreographer) with The Spot Sun Valley.

**JEFFREY K. HANSON** he/him (*Production Stage Manager*) is thrilled to return to ACT Contemporary Theatre where he has spent the majority of his career. A proud AEA member for 35+ years as part of Seattle's theatre community! Over those years Jeffrey stage managed over 100 productions for ACT. He is grateful for his relationship with The 5th Avenue Theatre where he also feels like part of the family. Most recently, Jeffrey was the stage manager for *Mary Poppins*. He has been stage manager for many ACT/The 5th co-productions including: *Urinetown*, *Jacque Brel Is Alive And Well*, *Grey Gardens*, and *Little Shop Of Horrors*. Around town: Seattle Rep (next up *Laughs In Spanish*), Seattle Children's Theatre, Taproot Theatre, Intiman and - for those who remember - The Bathhouse Theatre (where he got his Equity card).

**ISABELLA MARZIELLO** she/her/ella (*Assistant Stage Manager*) is thrilled to be back at ACT Theatre for *The Last Five Years!* A few of her favorite credits include, Village Theatre: *Legally Blonde*, *Beautiful: The Carole King Musical*, *Hello Dolly!*, ACT Theatre: *STEW*, Seattle Children's Theatre: *The Boy Who Kissed the Sky*. Isabella holds a BA in Theatre Arts from the University of Puget Sound. She sends her endless love and thanks to her friends and fiancé for their constant love and support.

**LORT**  
League of Resident Theatres



The 5th Avenue Theatre is a member of the League of Resident Theatres (LORT), a nationwide association for not-for-profit theaters.

The actors and stage managers employed in this production are members of Actors' Equity Association, the union of professional actors and stage managers in the United States.

The Director / Choreographer is a member of the STAGE DIRECTORS AND CHOREOGRAPHERS SOCIETY, a national theatrical labor union.

Backstage employees are represented by the International Alliance of Theatrical Stage Employees (or IATSE) Local #15 and IATSE Local #488. Costume shop and Wardrobe staff and Child Actor Guardians are represented by IATSE Local #887. Hair and Makeup staff and scenic painters are represented by IATSE Local #488.

All the musicians playing in the orchestra for this performance are represented by the American Federation of Musicians of the United States and Canada, Local 76-483, AFL-CIO.

The scenic, costume, lighting, and sound designers in LORT theaters are represented by United Scenic Artists local USA-829 of the IATSE.

The 5th Avenue Theatre is a member of the National Alliance for Musical Theatre. Founded in 1985, NAMT is a national service organization dedicated exclusively to musical theatre. Members, located throughout 34 states and abroad, are some of the leading producers of musical theatre in the world, and include theatres, presenting organizations, higher education programs, and individual producers.



SEATTLE  
SHAKESPEARE

PERFORMANCES AT



CONTEMPORARY  
THEATRE

A SEATTLE SHAKESPEARE COMPANY &  
ACT CONTEMPORARY THEATRE JOINT PRODUCTION

# TWELFTH NIGHT

WRITTEN BY **WILLIAM SHAKESPEARE**  
DIRECTED BY **ANNIE LAREAU**

**JUNE 7 - 22, 2025**

Viola is in love with Duke Orsino, who is in love with Olivia, who is in love with Cesario, who is actually...Viola. Seattle Shakespeare Company makes its debut at ACT Contemporary Theatre with a new joint production of this gender-fluid romp and treasured comedy, set in a hopeful post-WWII Italy. Director Annie Lareau explores the diversity of love, reminding us how relevant Shakespeare remains today.



**GET TICKETS**

## MARQUEE SOCIETY

We gratefully acknowledge the following individuals and organizations who have committed \$1 million or more through their lifetime annual and capital gifts to support The 5th's dedication to artistic excellence, our service to children and families, and our development of new musicals.

Marleen and Kenny Alhadeff  
ArtsFund  
Renée and Carl Behnke  
The Sheri and Les Biller Family Foundation  
Christabel Gough  
The Estate of Marian Lackovich  
The Norcliffe Foundation  
Ann Ramsay-Jenkins

Steve Reynolds  
The Herman and Faye Sarkowsky  
Charitable Foundation  
Seattle Foundation  
Bonnie and Jim Towne  
U.S. Bank  
Washington State Historical Society  
1 Anonymous

## ANNUAL GIVING

We would like to say thank you to the following donors who provided support at the \$600 level and above as of January 21, 2025. Through their annual and fund-a-need gifts, donors become partners in our commitment to artistic excellence, community engagement, education, and expanding the canon of musical theater. For more information on how you can support The 5th, please contact the Philanthropy office at 206.971.7903.

### VISIONARIES

Marisa Behnke and  
Corey Ginsberg  
Renée and Carl Behnke  
Sheri and Les Biller  
The Sheri and Les Biller  
Family Foundation  
Cascade Asset  
Management Company  
Tom and Susan Handley  
The Estate of Marilyn  
Lee Huey  
The Estate of H. David Kaplan  
Patrick Kennedy and  
Melissa Ries  
John and Deanna  
Oppenheimer /  
Columbia Hospitality  
Premiera Blue Cross  
Ann Ramsay-Jenkins  
Steve Reynolds  
Unico Properties +

The Capital Grille +  
Margaret Clapp  
DC '74 graduate  
DCG ONE +  
Dennis and Deborah DeYoung  
Dave and Tiffany Girouard  
David and Cheryl Hadley  
Sue and Bill Lowery  
MaryAnn Mangels  
Rick Meadows and  
Brent Boylan  
Microsoft Philanthropies  
Judy Pigott  
Puget Sound Business Journal +  
Matt and Melitta Riley  
Seattle Foundation  
Jeanne Sheldon and  
Marvin Parsons  
Catherine and David Skinner  
Peter and Jane-Ashley Skinner  
Susie Stoller  
Kathy Surace-Smith  
and Brad Smith  
Karla and Gary Waterman  
Becca and Bill Wert  
Rosemary and Ken Willman

Robert R. Braun, Jr.  
Jon and Bobbe Bridge  
Brown & Haley +  
Debby Carter  
City of Seattle Office  
of Arts & Culture  
Elise and Thomas Constantine  
Erin and Greg Coomer  
Michael Cox  
Davis Property & Investment  
Brian and Laura DeNault  
Ethan Stowell Restaurants +  
Helen Fanucci and  
Christopher Beall  
Fonte Café +  
The Greco Family  
Matt Griffin and  
Evelyn Rozner  
Marilyn Gustafson  
Mark Hirayama and  
Sandra McKnight  
Margaret Holsinger  
Marlene and William Jenkins  
Robert Kakiuchi | Keela Williams  
Lee Keller  
Michele and Nick Keller  
SaSa and Ken Kirkpatrick  
Karen L. Koon  
Kyle Levine and Craig Pepin  
Myron and Shirley Lindberg  
Loeb Family Charitable  
Foundation  
Ed Manley  
Carmen Mayo  
Beth Moursund

### INVESTORS

ArtsFund  
Bank of America  
Buzz and Beth Porter  
Purple Cafe and Wine Bar +  
1 Anonymous

### CREATORS

4Culture/King County  
Lodging Tax  
Alaska Airlines  
Marleen and Kenny Alhadeff

### EXECUTIVE PRODUCER'S CIRCLE

Alder & Ash +  
Geoffrey Antos  
ArtsFund – Williams/  
Bauer Fund  
Steven and Theresa Binger  
The Boeing Company

Jeff Myrter  
Nancy and William Nichols  
Larry and Valorie Osterman  
John Payes and  
Cameron Crutcher  
Patti Payne  
Potelco, Inc.  
Rider Seattle +  
Joe and Linnet Roberts  
Ansel Rognlie and  
David Steindl  
SAFECO Insurance  
Mary See Foundation  
Jean Sheridan  
Sound Community Bank  
Sarah Speck  
Cynthia Stroum  
Helen R. Stusser  
Gary and Elizabeth Sundem  
TIDAL+  
Bruce and Peggy Wanta  
Waterways Cruises  
and Events +  
Wells Fargo  
Eileen Glasser Wesley  
and Mark Wesley  
Jacqueline and Daniel Widdis  
Allen and Janice Wiesen  
Grace Yuan  
Michelle and Mike Yurka  
1 Anonymous

## DIRECTOR'S CIRCLE

Ravija Amlani and  
Prateek Garg  
Banner Bank  
Howard and Lynn Behar  
Bill Berry  
Eric Blom and Min Park  
Lindsay Bosch  
Catherine Boshaw  
and Doug Edlund  
The Boydston Foundation  
Brandon Bray  
Debbie Brown  
Grant and Emilie Castle  
Clark Nuber PS +  
Kim and Perry Clarke  
Phil and Geda Condit  
Marilyn Covey\*  
Davis Wright Tremaine  
Deloitte  
Stephen Dwoskin and  
Janet Donelson  
E + H Humbly Bumbly  
Foundation  
Cassie and Alan Finkelstein  
Jeffrey and Eleanor Freeman  
Ken, Angela, and  
Chris Freeman  
Gary J. Fuller and  
Randy L. Everett

Wanda J. Herndon  
Mindy and Brady Hill  
Suzanne Hittman  
HomeStreet Bank  
Tami Hurwitz  
Raj and Monika Jain  
Nina and Barry Jennings  
Brad Jones  
Travis and Suzanne Keeler  
KPMG  
Kimberly Kuresman  
Debbie Loop  
Davia Loren  
Jim and Elizabeth Lund  
Brian Matthew  
Terry McCarthy  
Alexandra McMillan  
Bob and Abby Mellon  
The Morgan Fund at  
Seattle Foundation  
Gregory and Marta Oberg  
John and Jenée O'Brien  
Jake and Gretchen  
Olsen-Jacobsen  
Annette and Bob Parks  
Mary and D. Pat Patterson  
Paul and Dina Pigott  
Retail Management Solutions  
Ken Ragsdale  
Tiia-Mai Redditt  
Tony Repanich  
Retail Management Solutions  
Rachel and David Robert  
Sarah Rueker  
SAFECO Insurance  
Skip Sampelayo  
Bob Simpson  
Eric Smith  
Elizabeth Speck  
Luke Sternberg  
Ed and Kathy Sterner  
Rose Tatlow and Neil Roseman  
Constance Thayer  
Terri Thomsen  
Bonnie and Jim Towne  
Eric and Julie Trott  
John and Darlene Wilczynski  
Tom and Jackie Wilkinson  
Mary Williams  
Wright Runstad & Company  
Adrienne Wu  
1 Anonymous

## ARTIST'S CIRCLE

Albert Lee Appliance  
Kirsten Anderson and  
Kevin Sabol  
Megan and Chris Anderson  
Susan and Heather Anstead  
ArtsFund – Peter F.  
Donnelly Merit Fund  
Ash Family Foundation

The Baldwin Group  
Keith and Sheri Bankston  
Jeff Barr  
Melissa Barrett  
Don and Carrie Beaty  
Andrew and Shayna Begun  
Ted and Florence Begun  
Xerxes Beharry and  
Shannon M. Quinn  
Glen and Sherri Bodman  
Theodore and Marci Boe  
Daniel and Janet Bolong  
SL Bolton  
Richard and Margaret Bossi  
Herbert and Jerri Brod  
Michael and Janelle Brookman  
Alice M. Brown  
Yelena and Tom Button  
Carlson Family  
Judi Chapman  
Janet and Robert Coe  
Kathleen and Bill Collins  
Sheila and Michael Cory  
Mike and Maggie De Laurentis  
Matthew and Victoria Ellis  
Sophy and John Fan  
C. Jeanne and Jack Fankhauser  
Richard and Maude Ferry  
Michel and Dean Frerker  
Kris Gould  
Kathy and Kelly Graffis  
Brian and Rebecca Grant  
Brian Guy  
Erika Handley and  
Andrew Taborda  
Bart and Toni Heath  
Donald and Lorelei Heisler  
Mary and Tom Herche  
Jennifer and Alan Heuberger  
Tina and Randy Hodgins  
Joan and Patrick Hogan  
Carolyn and George Hubman  
Shawn Hurley  
Marilyn Iverson  
Dave and Rio Jones  
Kathy and Mark Keithly  
Molly and Devin Kemper  
Forrest St. John Kim  
Jeffrey and Barbara King  
Randall and Martha Kintner  
Tami Knee  
Ian and Laura MacNeil  
Robert Land and Renee  
McCormick  
Carol Lewis and  
Andrew Pearson  
Lott Foundation  
Ken and Darlene Lowe  
Twyla and Tom Lucas  
Molly Matthews  
Chie Mitsui  
Lilly Moore

Gregg and Judy Nelson  
 Robert and Claudia Nelson  
 Janice Nishimori  
 Karen E. Phillips  
 The Pokemon Company  
 Eleonore Pottenger  
 Richard Pyle and Gail Nunn  
 Dennis Reichenbach  
 Sally S. Renn  
 Lucille Rohrs  
 John Roos  
 Michelle Ulick Rosenthal  
 Lori and Mehdi Sabet  
 Stephanie Schuster  
 and Chris Tezak  
 Darren and Anne Shakib  
 Edward and Kathleen Sherry  
 Peggy and Greg Smith  
 Catherine Sreensivasan  
 Jeffrey Sutherland  
 and Ben Aguiluz  
 Chris and Lisa Swan  
 Gene and Ruby Tanaka  
 Jason and Jeanne Thompson  
 Tracy and Michael Thornton  
 Mary and Bill Watts  
 Karen and Mark Weber  
 Kip White and Gregory Crick  
 Amy Whittenburg and  
 Stephen Rattner  
 Madeline Wiley and  
 Bob Smithing  
 Sterling and Melinda Wilson  
 Paul Yaros and Joel Young  
 7 Anonymous

### PRODUCER'S CIRCLE

Kathy Aaron  
 Carol and Ray Airone  
 Chap and Eve Alvord  
 Ann and Joe Ardizzone  
 Edith and Ray Aspiro  
 Dave and Leigh Baer  
 Bea Baker  
 Doug and Maria Bayer  
 Rick and Linda Beck  
 Ronald L. Berenstein  
 Brenda Berg and  
 Diane Lawson  
 Deidre Blankenship  
 Neal and Katherine Booth  
 Sue Anne Brent  
 Denise and David Brumbaugh  
 Karen Caldwell  
 Karen Cameron  
 Arthur and Kristine Carre  
 Deliese and Paul Catterson

Barbara Clinton and  
 Ray Wheeler  
 Russ and Julie Collins  
 Ross and Laura Comer  
 Sandra Cox  
 Diana and Christopher Crettol  
 Christina Cyr and Alan Page  
 Walton Dabney  
 Martha Dawson  
 The DeVinc Family  
 Wende Doohan  
 Kristine Dorrain  
 Ellen Duernberger  
 Tamara Dugaw  
 Dunsire Family Foundation  
 Robert Ehrlich  
 Craig and LeAnn Elkins  
 Sandra L. English  
 Jennifer and Michael Faddis  
 Fielder Family  
 Charles Fink and Leonard Jones  
 Mary Formo  
 Richard and Barrie Galanti  
 Gazarek Immediate  
 Impact Fund  
 Mary Glackin  
 Michelle Goldberg and  
 Michael Adler  
 Jennifer Guild  
 Marie and Brad Gunn  
 Mike Hackett and Cherie  
 Lenz-Hackett  
 Catherine Hall  
 Eric and Merle Hamada  
 Chuck and Kathy Hamilton  
 John and Katherine Harnish  
 Deborah Haynes  
 Richard and Marilyn Herzberg  
 Christa Holmes  
 Ileana Howard and  
 Prabhat Varma  
 Kim Howard  
 Laurin C. Huffman II  
 Alice Hurd Memorial Fund  
 Meredith and Jim Hutchins  
 Kathy and Michael Jackson  
 Linda Jensen  
 Jezorek Family  
 Judy and Jerry Karwhite  
 Konstantin and Kristi  
 Komissarchik  
 Teri Kopp and Walt Weber  
 Janet and Perry Kusakabe  
 Jim Ladd  
 Mr. Bryn Larsen  
 Patrick and Cheryl Layman  
 Ben Leifer  
 The Lesser Family  
 Mark Levine and John Keppeler  
 Brian Levitt and Stephen Lee  
 Carla and Don Lewis

Capt Michael Lockwood,  
 USN ret., Mrs. Angelene  
 and Jeffrey Lockwood  
 Floyd and Kim Lorenz  
 Carol Masnik  
 Meredith McClurg and  
 Jeffrey Krauss  
 Kyle McEligot and Paul Brett  
 Jim and Laura Mendoza  
 Tami and Joe Micheletti  
 Jeffery C. Morris - The  
 Happy Cooker  
 Mitzi and John Morris  
 Jeff and Bev Neher  
 Ben and Denise Nelson  
 Steven and Victoria Odden  
 O'Neill Winery +  
 Angie Osborne and  
 Brad Watters  
 David and Debbie Palmquist  
 In Memory of Connie Parker  
 Petra Charitable Foundation  
 Russ Powell  
 Richard and Sharon Reuter  
 Bob Rhodehamel and  
 Dana Snyder  
 Michael and Maureen Rimkus  
 Marilyn and Patrick Roberts  
 Lori and Doug Rosencrans  
 Curtis and Myrna Rosler  
 E Schwab  
 Mr. Doug Seto  
 Miriam Shirley and Lynne Keller  
 David Showalter  
 Todd and Pauli Stakset  
 Colette Stallbaumer  
 Anne and Mark Stanton  
 Leigh and Susi Stevens  
 Warren Stickney  
 Pery and Diana Stultz  
 Terrence and Victoria Sweeney  
 Matthew and Catherine  
 Coles Tedesco  
 Stephen and Terri Thomas  
 Polly and Jason Thompson  
 Tito's Handmade Vodka +  
 Carole Tovar  
 Jim and Kathy Tune  
 Helen Viaene  
 Dr. John M. Wagner  
 Christina and Mark Walker  
 Jan Wanamaker  
 Thea Warner  
 Marilyn Wilt  
 Curtis and Margo Wright  
 5 Anonymous



## PATRON

Tyler and Georgia Addington  
 Meg Agnew and  
 Stephen Rupp  
 Susan Andersen  
 Louisa Barash  
 Anne Louise Barry  
 Gerald Bernhoft  
 Susan Bialous  
 Steve and Sandy Bosley  
 Larry and Donna Brooke  
 Angela Chabot  
 Christopher Cook and  
 Sandra Salzer  
 Gary Corbett  
 Rick and Barbara Cordray  
 R. Erin Craig  
 Amy Damerow  
 Barbara Crowe  
 Sharon Ducey  
 Ramona Emerson and  
 Brian McMullen  
 Lynnette and Mike Frank  
 Jean Gardner  
 Julie Goldberg  
 Drs. Verena and Basil Grieco  
 Seán and Bernadine Griffin  
 Elizabeth Hamren  
 Pamela Hendrickson  
 Sandy and Steve Hill  
 Eric Hurt and David Windstrup  
 Christine and Ryan Johnson  
 Linda and Theodore Johnson  
 Kristi E. Jones  
 V Lowell Kimble  
 Dave and Deb Kreidler  
 Quentin and Barbara Kuhrau  
 John Laks  
 Brian Lee  
 Randy M. Lee and  
 Mari Hooten Lee  
 Sandy Lew-Hailer  
 Becky Loeb  
 Blythe Manson  
 Mike Meagher  
 Peter and Kelli Miller  
 Nathanael Mortensen  
 Elisa and Chad Parry  
 Ann Perrott  
 Dr. James Patch and Jon  
 Breitenbach-Patch  
 Sheri Pym  
 Victoria Ries and Sam Saracino  
 Lauren and Alex Rolfe

Dan Shih and Ted MacGovern  
 Alec Smith  
 Karen and Kevin Smith  
 Michael and Edie Smith  
 Sallie Snyder  
 Kirk and Candice Soderquist  
 Sofia and Greg Taylor  
 Penny Tetter and Jack Lambert  
 Brian Thomas  
 Emory Thomas, Jr.  
 Erica Thrash-Sall  
 Kathy Thull  
 Suzy and Rick Titcomb  
 Joan Toggenburger  
 Ken Wade  
 Larry Winn  
 Wendy and Jeffrey Woolsey  
 H.S. Wright III and Kate Janeway  
 5 Anonymous

## PARTNER

Janet and Jean Adolphson  
 John and Joyce Arnold  
 Beth and Richard Baker  
 Earl and Marilyn Baker  
 Corrin Bauer  
 Cleve and Judith Borth  
 Philip Brazil  
 Ted Bruya  
 Mike and Lynne Bush  
 Edward and Nancy Callaway  
 Hang Chen  
 Andrew and Lorna Chin  
 Jack and Angela Connelly  
 Brenda Cooper  
 Jack Cousins  
 Tom E. Deacon  
 Cynthia Demeyere  
 Manya and Gary Drobnack  
 Donna Dupras  
 Cheryl and Steve Evans  
 Nyle and Terri Farmer  
 Nan Garrison  
 SallyAnn Geiger  
 Amy and Greg Glockner  
 Margo and Brian Godon  
 Wendy Grus  
 Shelly Hall  
 Mary Hamlin  
 Cathy and Larry Harger  
 Deb, Tod, Jasmine,  
 and Eliana Harrick  
 David Hill

Katy Hollenbaugh and  
 Chris Carollo  
 Gwen and Randy Houser  
 Walter Jaccard and  
 Bonni Sundberg  
 David Jensen  
 Marilyn Ketcherside  
 Megan and Tim Kirley  
 Mr. Steve Krenzel  
 Akshay Kulkarni  
 Jason Kuzma  
 Lammers Family Foundation  
 Angela Loney  
 Christina and Brad Mace  
 Jon Magnussen  
 Ceci and Joe Mano  
 Genevieve and Thomas Marsh  
 Mr. Sean McGrail  
 Georgene Mellom  
 Aaron Merrill  
 Shane Mitchell  
 Robert Nokes  
 Brandon Paddock  
 Stephanie and Jay Potter  
 Judy Ratner  
 Marilyn and Dennis Reid  
 David and Barbara Repanich  
 Matt Riley  
 Lisa and Bradley Rinker  
 Richard Rivera  
 Kristine Roberts and  
 Stephen Bowman  
 Betty and Wayne Robertson  
 Dale and Karmen Rolf  
 Sara Rosin  
 Stephen Schenzel  
 Susan Shanafelt  
 Ray and Kim Shine  
 Helen Sing  
 George and Debra Smith  
 Bob Smith  
 Astrid Staneff  
 Mary Stevens  
 Melissa and Jeremy Stone  
 Ron and Betty Strabbing  
 Ken and Lynne Tanino  
 Michelle Vogel  
 Amanda and Chris Weare  
 Hank and Yoko Weaver  
 Linda Wells  
 Caroline and Oliver Whitehead  
 Stephanie and Peter Wieland  
 Jasmine Yeh  
 3 Anonymous

## CORPORATE PARTNERS



## INSTITUTIONAL PARTNERS



Mary See  
Foundation



The Morgan  
Fund



Loeb Family  
Charitable  
Foundation



## CORPORATE COUNCIL MEMBERS



BANNER BANK



Deloitte. Freestone



Morgan Stanley  
THE AISTEAR GROUP  
AT MORGAN STANLEY



WRIGHT  
RUNSTAD  
& COMPANY

## IN-KIND PARTNERS

Alder & Ash, The Capital Grille, Davis Property & Investment, DCG One, Ethan Stowell Restaurants, Fonté Bar, Puget Sound Business Journal, Purple Café & Wine Bar, Rider, Tidal+, Waterways Cruises & Events

# THANK YOU FROM CONTEMPORARY THEATRE

**ACT Contemporary Theatre gratefully recognizes all donors of \$100 or more in alphabetical order below. Scan QR code or visit [acttheatre.org/support/donor-list](http://acttheatre.org/support/donor-list) to view a full list of all donors of \$1 or more.**



Lureane Aagard^	Julie Beckman & Paul Lippert	Mary Casey-Goldstein & Steve Goldstein	Dechant^
Diana & Warren	Becky Benaroya^	Arundhati Chandorkar	James Degel & Jeanne Berwick^
Aakervik	Jane & Albert Bender	John B. & Sallie C. Chaney^	Paul & Sandy Dehmer^
Claudio Acosta	Dr. Eric Bennett^	Jeannette Chanez	Ron & Jan~ Delismon^
Allen Adams & Alayne Cartales	Dr. Dick & Mrs. Lenore Bensinger	Mateusz Cichenski	Samantha Deluna & Jesse Bearden
Julie Adams	Samuel Berger	Daniel & Sandra Ciske	Gregory Denton & Janice Dilworth^
Bill & Janette Adamucci	Ruth & Greg Berkman	Dr. Hugh & Mrs. Suzanne F. Clark^	Fred Diamondstone & Mary Monschein
Sheena Aebig & Eric Taylor^	Luann & Irv Bertram^	Jacqueline K. Clemens	Mary Dickinson
Allan & Anne Affleck^	Laurie Besteman & Jack Lauderbaugh^^	Tim & Aaron Clements-Levin	Don DiJulio & Kathy Smith-DiJulio
David Aggerholm & Gwendolyn Lundberg^	In Honor of Shana Bestock	Judith & Robert Cline^	Craig & Kelley Dobbs^
Karen Aho	Peter & Fran Bigelow^	Karen Coates	Debbie Dodd
Dawn Aiken	Dennis Birch & Evette Ludman^	Ric Cochrane	Jae Dooley
Mary Alberg	Erik Birkeland & Jeffrey Cook	Alton Cogert	Bob Dowdy & Cherry Tinker
Ali & Robert Alexander	Rosemary & The Late David Blakemore	Zan & Stephan Collier^	Michael Dryja
David Allais	Kathleen & Rupert Bledsoe	Tom & Susan Colligan	Pat Dubrow
Anne Allgood & Bill Peria	Gregg & Jane Blodgett	Patricia & Theodore Collins^	Sharon Ducey
Elias & Karyl Alvord	Beth Blosten	Roger Collison	Kathryn Dugan^
Aaron Anderson	Joel Bradbury & Diane Morrison	Robert Coneybeer	Deborah Dwyer & Jay Field
Connie Anderson & Tom Clement	Gordon & Jacklyn Bradley	Marie Coon	Glenn & Bertha Eades^
Kermit & Danna Anderson^	John Bradshaw	Paul Cornish & Karen Kramer	Stewart Early
Linda Anderson	Kristi Branch & James Moore	Jan & Bill Corrison^	Peggy & Bill Eaton
Renate & Croil Anderson	Barry & Patricia Briggs	Michael & Sheila Cory	Amanda Ebbert & Kathryn Johnson
Virginia Anderson	Russell Brooks	Monique Courcy	Dr. Lewis S. & Mrs. Susan D. Edelheit
Walter~ & Melinda Andrews^	Dorothy & Dale Brown	Christena Coutsobous & Sean Bowles^	Brad Edwards~ & Karen Koon^
Anonymous (25)	Katherine Brown	Kathy Cowles & Brad Chamberlain^	Christine & Michael Edwards
Keith Ash & Kerry Keller-Ash	Lynn Brown	Bill & Marilyn Cranston^	Thomas Edwards
Jessica Askew	David Bucholtz	Shon Crewe & Andrew Reid	Shmuel El-Ad & Patricia K. Emmons
Christine & Perry Atkins	Carol & Jonathan Buchter^	William Cummings	Karen Elledge & Gerald Ginander
Kendall & Sonia Baker	Stephen Bucy	Jelena & Brian Curless	Helene Ellenbogen & Wayne Parker
John & Eva Banbury^	Carl Bunje & Patricia Costello~^	Chris Curry^	Jane Elliott
Mark & Heather Barbieri	Bruce Burger^	Margaret Curtin & Jim Wilder^	Lynne B. & Hollie Ellis^
Joan & Larry Barokas^	Mary Burki	Pavel Curtis & Kathleen Kells	Lisa Emerson & Scott Guettinger
William & Diana Baron^	Mr. Arthur Burrill	Philip & Barbara Cutler	Joanne R. Euster, PhD
Stephen & Kathleen Barrett	Michael & Lynne Bush	Julie D'Alessandro	Ken Ewert
Robert Basta	Jeanine Bushue	Pamela Dalry	Jeannie M. Falls^
David Bauer	Kevin Callaghan	Amy Damerow	Jennifer A. Farmer
Shawn Baz & Ellen Bezona^	Liz & Justin Camelia	Randolph Daniels & Susan Ephron	Elisabeth Farwell-Moreland
Regina & William Bear^	Carrie Campbell	Rosemary Daszkiewicz & Guy Thomas	Robin & Doug Ferguson
Kurt Beattie & Marianne Owen	Sonya & Tom Campion	Clay & Karen Dawson	Robin G. Ferguson
Don Beaty & Carrie Sjaarda^	Sandra & C. Kent Carlson^	Katherine De Bruyn	Mary Fialko
Nancy Beaudet & Daniel Jacoby	Brian Carter	Judy Deak & David Jarrell	
Chris Beckerman	Marianne Cartwright	Justin & Delaney	

# THANK YOU FROM

Barbara & Tim Fielden  
Charles Fink & Leonard Jones^  
Elissa Fink  
Carol Finn^  
Denice Fischer-Fortier & James Fortier^  
Michal Fishman & David Sheon  
Kathryn Flanagan  
Colleen Flanigan  
Mr. Rynold & Judge Deborah Fleck  
Travis Fleck & Erin Eiseman  
Corinne Fligner & Mark Wener  
Stacy Flood  
Jason Flood  
Anne Middleton Foster^  
Linda & Brad Fowler^^  
Rick Freedman^  
Eleanor & Jeff Freeman^  
Mr. John Friedmann  
Richard Frith & Judy Hademan  
Mirna Fritz  
Erin Fry  
Micaela Fujita  
Pamela Fukai  
Chris Fuller  
Dot Fuller^  
Jacob Garcia  
Roger & Kristine Garratt^  
Mike Gerke & Susan Campbell  
Ira & Courtney Gerlich^  
Katharyn A. Gerlich^^  
Lynn Gibson  
Ann Giesel  
Adriana Gil Miner  
Shelley Gill  
Annalisa Gironi & Kevin McCarthy  
Bruce & Peggy Gladner  
Joanna Glickler  
Carol & Tal Godding^^  
Gail M. Gosselin  
Connie Gould & Philip Rudman~^  
Dick & Jan Gram  
Andre Gray  
Bob Greco & Suzanne Schreiber  
Kelly & Jeffrey Greene  
Michael Greer  
Dr. Verena Grieco & Dr. Basil Grieco^  
Susan Griffith & Drew Fillipo^

Christian Gunter  
Penelope Guntermann & Michael Clifford  
Laura Gurley  
Eric Gutierrez  
Alisa Gutierrez-Vitello  
Paul & Sheila Gutowski^  
Brian Guy  
Angela Gyurko  
Kyle Haakenson  
Duncan Haas & Birgit Walbaum  
Jerry & Sue Haas^  
Peg Haggerty^  
Justine Halsey-Martin  
Mrs. Catherine M. Hamblet  
Sarah Hamrick  
Donna Hansen  
Lillian, Leonard, & Katie Hansen^  
Michael Harbour  
Kristine Haroldson  
Mark Haroldson  
Marcia Harper  
Maribeth R. Harper  
Gretchen Harrell  
Dr. Jeffrey Harris & Dr. Judith Wasserheit^  
Lisa Haug & Amado Shuck^  
Gregory Hauser  
Susan Hauser  
Leanne Hawkins^  
Rodney & Jill Hearne\*  
James & Barbara Heavey  
Susan & Richard Hecht^  
Marilyn Heinemann  
Heinrich-Dahlheimer Foundation^  
Astrid Helgeson  
Aaron & Christina Hendelman  
Jean & Paul Henderson^  
Amy J. Henry MD^  
Drew & Dena Herbolich  
Ryan Hicks  
F. Randall- & Barbara Hieronymus^  
Stephanie M. Hilbert^  
John & Ellen Hill  
Tim & Margot Hill  
Alison Hirsch  
Jim & Linda Hoff^  
Kate Hokanson^  
John Holt & Susan Trainor Holt^  
Leslie & Daniel Hopkins  
Sara Hoppin^  
Sarah Horrigan

Gary & Parul Houlahan^^  
Chris Houts  
Cynthia & John Howe  
Kathy Hsieh  
Mrs. Susan & Hon. Philip Hubbard^  
Cynthia Huffman & Ray Heacox^  
In Honor of Cynthia Huffman & Ray Heacox (2)  
Cheryl Hughes  
Sophie H. Hume  
Dan & Connie Hungate^  
Susannah Ittis^  
Joel Ivey & Sheyrl Murdock^  
Wendy Jackson  
Stu & Sandy Jacobson^  
David James  
Ann James-Waller & Fletch Waller  
Susan & Fred Jarrett  
Mark Jenkins  
Linda & Ernst Jensen  
Paula Jensen  
Judith Jesiolowski & David Thompson^  
Christine Jew  
David B. Johnson  
Kristina & Ted Johnson^  
Linda & Ted Johnson^  
Patti Johnson  
Jay Johnston & Marylyn Ward  
Margaret Johnston  
Mary & Gifford Jones^  
Robert & Char Jones  
Stephanie & Steve Jones  
Jonelle Jordan  
Lisa & Norman Judah^  
Dysa Kafoury  
Fotini Kaklamanou & Nuno Dinis  
Joan Kalhorn  
Marta & Sven Kalve  
Shubhangi Kanetkar  
C.R. Kaplan^  
Jane Kaplan  
Dave Kasik  
Paul Kassen^  
Ira Kaye  
Josephine A. Keefe  
Kathryn Ann Kelly  
Martin Kelly  
Ross & Ruth Kennedy  
Omie & Laurence Kerr^  
Lura & David

Kerschner^  
Laura Kessler  
Cathy Kitto^  
Ben Klasky  
Cindy Klettke^  
Rachel Klevit & Jerret Sale^  
Mary Koch  
Allan & Mary Kollar  
Cari & Fred Kreitzberg  
Savannah Krenzel  
Cory Kringlen^  
Bill Kuhn & Patricia Daniels^^  
Akshay Kulkarni^  
Jeff Kunins  
Jim & Jean Kunz^  
Ned & Louise Kurabi  
Jason Kuzma  
Edie Lackland^  
Sharon & Wayne Lamm  
Joan Lasser  
Frank Lawler & Ann McCurdy^  
Rhoda & Thomas Lawrence^  
J Leach  
Elizabeth Leber & Andrew Coveler  
John Lee & P. M. Weizenbaum  
Randy M. Lee & Mari Hooten Lee  
Tecla J. Legge  
Frank & Waltraut Lehmann  
Eileen Lennon & Barrie Carter  
Catherine Levi  
(Cascadia Foundation)  
In memory of Ruth Brilling  
Eyal Levy & Zehava Chen-Levy^  
Jane Lewis  
Bonnie Lewman  
Diane & Gregord Lind^  
Kelland Leland & Mary Kae Irvin  
Anne & Steve Lipner  
Christine Livingston  
Martha Lloyd & Jim Evans  
Ms. Karen & Dr. John Loeser, MD^  
David Longmuir^  
John P. Lowrie & Ellem McLain-Lowrie  
Lucy Gaskill-Gaddis & Terry Gaddis  
Elaine Lutyens  
Mark P. Lutz^

# THANK YOU FROM

C. Gilbert Lynn &  
Richard Voves^  
Jane & James Lyons^  
Mary & Donald  
MacFarlane^  
Hugh R. MacMahon  
Kevin Malgesini  
Dorothy H. Mann, PhD  
Helen Mark^  
Brian Markham  
Bill & Holly Marklyn^  
Ian D. Marks & Margaret  
A. Marks  
Matt Marshall  
Lora & Parker Mason^  
Kyoko Matsumoto  
Wright^  
Dave Matthews  
Tessa Matthey  
Elizabeth Maunz  
Julie K. Mayer  
Ms. Carmen D. Mayo  
Janet McAlpin  
Pamela McCabe  
Meredith McClurg &  
Jeffrey Krauss^  
Fritz & Jenny  
McCormack  
Caitlin McCown  
Rachel McCracken  
Deirdre & Jay McCrary  
Carol & Bob~  
McDonald^  
Dawn McGinty  
Tim McKey  
McKibben Merner  
Family Foundation  
Meegan McKiernan &  
David Gloger^  
Sarah B. Meardon^  
Dr. John & Mrs. Gail  
Mensher^  
Sharon Metcalf & Randy  
Smith^  
Tami & Joe Micheletti^  
Barbara & Jim Miller  
Laura Miller  
Tom & Terri Olson Miller  
Mark & Susan Minerich  
Liz Mirante & Steve  
Kurtz  
Tracie Mitchell  
Henry Miyoshi~ & Susan  
Woyna  
Donald & Kerri Mochel^  
Alyssa Montgomery  
Michael & Connie  
Montgomery  
Kristin Moornaw  
James Moore & Joan  
Romano^  
Malcolm & Phoebe Ann

Moore  
Mary Morales  
Sandy Morgan  
Eleanor Moseley  
Pollnow  
Alvin & Janie Moser  
Eric & Georgia Mosher  
Dayle Moss & David  
Brown^  
Andrew Muhic  
David Murdock  
Nadine~ & John  
Murray^  
Jennifer Nagel & John  
Thomas  
Allison Narver  
Marlene Nelson & Curt  
Chenoweth  
Erika J. Nesholm^  
John & Laurel Nesholm  
Mrs. Judy~ & Dr. Arnie  
Ness^^  
Randy Newell^  
Jane Nichols  
Kerry & Gwen  
Nicholson  
Charles & Eleanor Nolan  
Craig & Deanna  
Norsen^  
Daniel Nye  
Helen & Robert Odom  
Margaret Ohashi  
Meg Olsen  
Sandra Olsen^  
Kristin Olson  
Hal Opperman &  
JoLynn Edwards  
Will Patton & Joni  
Ostergaard  
Norene Ott  
Toni Paddock  
Erika Paduano-Karch  
Cathryn Palmer  
Richard & The Late Sally  
Parks^  
Cecilia Paul & Harry  
Reinert^  
Susan Pazina  
Kathryn Pearson  
Casey Peel & Daniel  
Nidzgorski^  
Vanessa Pegueros  
Maggie & Clint Pehrson  
Virginia Pellegrino  
Deborah Perluss  
Pamela Perrott^  
Chuck Perry^  
Gerald A. Peterson  
Steven Philips  
Steven Philips  
Barbara Phillips^  
Dianne Pickerill

Diana Pien & Merle  
Weiss  
Judy Pigott  
Mary Pigott  
Donald Pogoloff^\*  
Stephen Poteet & Anne  
Kao^  
John & Pamela Powel  
Debra & Chad Pralle  
Matthew & Linda  
Radecki^  
Barbara & Daniel Radin^  
Kathi & Doug Raff^  
Suzanne Ragen^  
David Ragozin^  
Raich-Jones Charitable  
Fund  
Connie & Kirk  
Redmond^  
Margo Reich^  
Dennis Reichenbach  
Jan & Kerry Richards  
Cindy & Lance  
Richmond^  
Carla T. Rickerson  
Annemarie Riese &  
Terry Kisner^  
Lisa & Bradley Rinker  
Rebecca Lynn Ripley  
Laurel Roberts  
Bruce F. Robertson  
Jill Robinson  
Rafael Robledo Juarez  
Randy & Willa~ Rohwer  
Beth Rollinger  
Ariel Rosemond  
Jo Anne & Donald  
Rosen^  
Lynda Rosendahl^  
John Rosler  
Michael Ross  
Patricia & David Ross  
Eric & Margaret  
Rothchild^  
Al Roundtree  
Evelyn Renee Rozner^  
Sarah Rudinoff  
Betsy Runke  
Catsie Rush & Richard  
Andler^  
Randy Rush & Mary  
Mason  
Jennifer Cells Russell  
Deborah Rustin  
Jain Rutherford  
Dr. Tove Ryman &  
Rayner D'Souza^  
Vladimir Samarskiy  
Dr. Werner & Mrs. Joan  
Samson  
Margaret Sandelin^  
Allen Sanders

Darrell Sanders  
Barbara Sando^^  
Julia Sarkissian  
Gordon Sata & Doris  
Lock  
John Savo  
Paul & Terri Schaake  
Sandra Schaffer  
Debrah Schenk  
Shelley Schermer  
James R. Schneidmiller  
& Gina I. Vangelos  
Julie Schoenfeld^  
Robert & Deborah  
Schor^  
Tera Schreiber  
Alan & Susan Schulkin^  
Mike & Nancy Schultz  
Evilo A. Schwab^  
Ken & Sandy Schwartz^  
Karen L. & Patrick M.  
Scott  
Lorrie & Andrew Scott  
Barry & Colleen Scovel^  
Ted~ & Patricia Scoville  
John M. Seidler  
Tor Seidler  
Mark & Patti Seklemian  
Bill Setter  
Dr. Michael C. Shannon  
Michael & Jo Shapiro  
Daniel Shih & Ted  
McGovern  
Barbara & Richard  
Shikiar^  
Judy & Ben Simmons^  
David Sisson  
Peggy O'Neill Skinner &  
John Skinner  
Dianna Sloss  
Doug Smith  
John Smith  
Marilyn S. Smith  
Peggy & Greg Smith  
Sheila Smith & Don  
Ferguson  
Warren & Nancy Smith^  
Linda Snavelly^  
Mary J. Sobczyk  
Janet C. Sorby  
Aurash Soroosh  
Jeanne Soule^  
Rose & The Late John  
Southall^^  
Linda Barker Spear  
Ben Spicer



# THANK YOU FROM

Alec P. Stais  
Lois Steinberg  
Delphine & Charles  
Stevens  
Geoff Stevenson &  
Andrea McBeth  
Karen Stockert & Russ  
Childers  
Derek Storm & Cynthia  
Gossett^  
Gary & Rebecca  
Streitmatter  
Richard & Diane  
Sugimura  
Sally Sullivan^  
Liann Sundquist  
Dr. Christina Surawicz &  
Mr. James Bushyhead^  
Susan L. Ehlers^  
Earl & Charlotte  
Sutherland^  
Jeffrey A. Sutherland^  
Lisa & Christopher  
Swan  
Constance Swank^  
Michael J. Sweeney  
Virginia Sybert  
Maria Sykes  
Hana Tadesse  
Sara Tadesse-Bell  
Carolyn Takei  
Tammy Talman^  
Gene & Ruby Tanaka  
Sofia & Greg Taylor  
Wendy Taylor  
William & Patricia Taylor

Nancy & David Thacher  
Sean Thayer  
Amy Thone  
Arlene & Mark  
Tibergien^  
Jordan & Tegan Tigani  
Jonnae Tillman  
Susan Trapnell & Erik  
Muller  
Trial & Error  
Productions^  
Christopher & Mary  
Troth  
Diana Trotter  
True-Brown  
Foundation^  
Jim & Kathy Tune^  
Rob Anthony Ungaro^  
David & Shirley Urdal^  
Terra Vall-Spinosa  
Pieter & Tjitske Van Der  
Meulen  
Sharon Van Valin &  
Richard Tait  
Menno van Wyk  
Andrea Vanecko  
Vijay & Sita Vashee^  
Callie Vassall  
John H. Vassall, MD &  
Callie Vassall  
Dr. Elmar Vinh-Thomas  
M. Louise & Mark R. Von  
Walter  
Ginger Voorhees\*  
Shanna Waite  
Mary & Findlay

Wallace^  
Robin Waples  
Mrs. Judy & Dr. Mike  
Waring^  
Jerry Watt & Vreni Von  
Arx Watt  
Jeff & Carol Waymack  
Eugene Webb  
Mr. John & Dr. Sarah  
Weinberg^  
Ann & Richard Weiner  
Audrey Weitkamp  
Lindsay Welliver  
Joella Werlin^  
Janet Westin & Mike  
McCaw^\*  
Christopher White  
Mary & Donald  
Wieckowicz^  
Teri & Chuck Wiegman  
Jay & Linda  
Willenberg^  
Barbara J. Williams^  
Dianne & Douglas Wills^  
Carl Wilson^  
Donald & Judy Wilson^  
Kathy & Chic Wilson  
Richard A. Wilson^  
Scott & Shirley Wilson  
Rob & Becky Witmer\*  
Jodie Wohl  
Susan Wolcott &  
George Taniwaki^  
Judith Woods^  
Wendy Woolery &  
Glenn Nielsen

Mehret Worku  
Ann P. Wyckoff^  
Dr. Allen Wyler  
Wyman Youth Trust  
Leslie D. Yamada  
John Yamin^  
Kairu Yao^  
Diane & John  
Yokoyama^  
In Memory of Leda Yolo  
Karl & Ellen Zahlis^  
Marco Zangari  
Eric Zann  
Andrew Zellers  
Jennifer Zeyl & Matt  
Starritt  
Sam Zinner & Walt  
Mason  
Joyce & Christian  
Zobel^  
Fujie Zong  
Igor Zverev & Yana  
Solovyeva^  
  
~ Deceased  
^ Donor with 5+ years of  
uninterrupted support  
\* Falls Legacy Circle  
Member

This list reflects  
donations made  
December 2023  
through November  
2024.

## PARTNER CIRCLES

### TECH TALKS

#### Supporting Players+

An insider's look at the technical wizardry that brings our productions to life.

### DRESS REHEARSALS

#### Ensemble Players+

Be among the first to experience a brand-new production at a private Dress Rehearsal.

### ADVANCE SUBSCRIPTION ACCESS

#### Activists Circle+

Enjoy early announcement of the 2025/26 Season and be first in line to renew your subscription.

As your support deepens, so do your benefits. Pre-show toasts with ACT leadership, backstage tours, ticket discounts, parking passes, and so much more are all available. Tech Talk invites start with just a \$100 donation.

**Ready to step into the spotlight?** Scan the QR code to easily donate online or visit [give.acttheatre.org/encore25](https://give.acttheatre.org/encore25). If you'd prefer to make your gift via mail, donation envelopes are available in the lobby.



# ACT LEADERSHIP

## BOARD OF TRUSTEES

Cynthia Huffman, *Chair*  
Erika Nesholm,  
*Secretary*  
Gary Houlahan,  
*Treasurer*

Bill Kuhn  
John Langs\*  
Brian Markham  
Al Roundtree

Ben Spicer  
Hana Tadesse  
Bob Wright  
*\*Ex-Officio*

## FOUNDATION BOARD

Kermit Anderson, President  
Brad Fowler, Vice President  
Gary Houlahan, Treasurer  
Jim Minorchio, Secretary

Trevor Cobb  
Cynthia Huffman  
Rachel McCracken  
Sheila Smith

## ADVISORY COUNCIL

Sheena Aebig  
Kermit Anderson  
Joan Dee Barokas  
Kurt Beattie\*  
Dr. Eric Bennett  
Laurie Besteman  
Jeannie M. Falls  
John H. Faris  
Charles Fitzgerald  
Brad Fowler  
Katharyn Alvord Gerlich  
Carolyn H. Grinstein  
Sara Comings Hoppin

Kate Janeway  
Jonathan D. Klein  
Diane Lind  
Jane W. Lyons  
Douglas E. Norberg  
Dr. George Ojemann  
Kristin G. Olson  
Eric Pettigrew  
Pamela Powers  
Katherine L. Raff  
Suzanne Ragen  
Catherine Roach  
Jo Anne Rosen

Faye Sarkowsky  
Carlo Scandiuzzi  
Barry Scovel  
Susan Trapnell  
Brian Turner  
George V. Willoughby

### **Emeritus Council**

Richard C. Clotfelter  
Esther Schoenfeld  
*\*Artistic Director*  
*Emeritus*

## CORE COMPANY

Anne Allgood  
Christine Marie Brown  
Joshua Castille  
Avery Clark  
Khanh Doan  
Yussef El Guindi  
Keiko Green  
Rachel Guyer-Mafune  
Reginald André Jackson  
Claudine Mboligikpelani Nako  
Brandon O'Neill  
M.L. Roberts

Chip Sherman  
Jasmine Jean Sim  
Adam Standley  
Ray Tagavilla  
Nathaniel Tenenbaum  
Tori Thompson  
Amy Thone  
Connor Toms  
Lindsay Welliver  
R. Hamilton Wright  
Connie Yun

## ARTISTS UNDER COMMISSION

Holly Arsenault

Andrew Lee Creech



**ACT Contemporary Theatre has renewed our commitment to our mission, values, culture, and the creation of New Works. We lay them out here to invite conversation and hold ourselves accountable.**

## OUR MISSION

ACT is a contemporary theatre where artistic ambition and civic engagement unite.

## WE BELIEVE

### ACT STATEMENT OF VALUES AND COMMITMENTS

ACT believes in the power of theatre to change lives. For too long, the lives of our institution has focused on have been predominantly white and able-bodied. We acknowledge that ACT has worked inside biased systems that have continued to center only a small group of our global community. We want our art to be joyful and our work to have a spirit of adventure, so we commit to building thoughtful guardrails to bolster an environment where we can all be brave and buoyant together.

Developed by the Staff, Core Company, and Trustees of ACT Contemporary Theatre, this statement of values and commitments was created to ensure the well-being of artists, collaborators, board members, and staff to engage in the spirit of an ever-improving process.

## OUR VALUES

**We are people-led and art-centered.**

**We believe in creating a safe space in which to do dangerous work.**

**We depend on each other for clear, honest, and responsible communication.**

**We believe that the building of excellent art is risky and joyful, and takes time.**

**We strive to ensure that artistic trust is baked into the way we work.**



**LEARN  
MORE!**



**Share the live theatre experience with students when you bring them to ACT's Engage the Stage!**

Our unique 90-minute student matinee program explores the magic and making of theatre, including conversations with the actors & directors.



**ENGAGE  
THE STAGE**  
student matinees



**Golden**

**Tuesday, May 6 at 11am**

*Our last event sold out, so learn more about our program & register now!*



# ACT CONTEMPORARY THEATRE STAFF

## EXECUTIVE

Elisabeth Farwell-Moreland  
*Interim Producing Artistic Director*

Alyssa Montgomery  
*General Manager*

## ARTISTIC

Kurt Beattie

John Langs

*Artistic Directors Emeriti*

Shana Bestock

*Artistic Associate,  
Education and Engagement*

Margaret Layne  
*Casting Director*

## BOX OFFICE

Peter Hiebert

*Box Office Manager*

Jeremy Jackson

*Box Office Assistant Manager*

Christina Liburd

*Box Office Lead*

Madelyn Marks

Lillie Wirth

*Box Office Representatives*

## DEVELOPMENT

Madysen Ellars

*Individual Giving Manager*

Kristine Haroldson

*Stewardship and Events  
Manager*

Katie McKenna

*Development Officer for  
Institutional Partnerships*

## FINANCE

Mirna Fritz

*Director of Finance*

Kevin Peterson

*Staff Accountant*

## IT SUPPORT

InterPlay

## LEGAL REPRESENTATION

Dresden Law PLLC

Foster Garvey PC

Pacifica Law Group

Perkins Coie

## MARKETING, SALES, & COMMUNICATIONS

Tess Berger

*Creative Brand Manager*

Amanda Cantlin

*Marketing Specialist*

Colleen Flanigan

*Interim Director of Marketing  
& Sales*

Amber Granger

*Marketing Coordinator*

Giao Nguyen

*Digital Content &  
Communications Manager*

Shane Regan/Michelle

Sanders Communications

*Public Relations*

## OPERATIONS

Jae Dooley

*Facilities Manager*

Katie Duff

*Facilities Technician*

Casey Lawrence

*Assistant Director of Facilities*

## PATRON SERVICES

Tanya Wanchena

*Patron Services Manager*

*Patron Services Staff*

Bill Abelson

Monica Axelson

Dano Beal

Kelly Beal

Renee Boehlke

Talia Colten

Natalia Elston

Karen Gillespie

Coco Justino

Marlene Lahaise

Alfreda Lanier

Matthew Long-Rhyne

Mel Longley

Kwan Lui

Celia Major

Jordyn McDermott

Sarah Meltzer

Tracie Nettles

Maryann Palmer

Markus Rook

Jessica Severance

Thalia Shelver

Mel Smith

Sharen Spencer

Carole Sykes

Dominic W. Wallace

Haleigh Wanchena

Claudia Webb

## PEOPLE & CULTURE

Astrid Helgeson

*Director of People and Culture*

## PRODUCTION

Lisa Bellero

*Head Scenic Painter*

Zachary Burns

*Head Audio Technician*

Kim Dancy

*Head Draper*

Larkin Dimeff

*Costume Shop Assistant*

Chandler Eichele

*Stage Operations Swing  
Technician*

Patti Emmert

*First Hand*

Nick Farwell

*Stage Operations Supervisor*

Melissa Gomez

*Firsthand / Swing Dresser /  
Crafts*

Joel Herrera Rivera

*Head Props Artisan*

Cal Hostetler

*Lead Scenic Carpenter*

Ada Karamanyan

*Production Office Manager*

Cat V. Kerr

*Prop Shop Manager*

Eric Koch

*Technical Director*

Caitlin McCown

*Director of Production*

Sally Mellis

*Head of Wardrobe*

Nick Murel

*Associate Technical Director*

James Nichols

*Head Stage Carpenter*

A G Quinn

*Lead Scenic Carpenter*

Jeff Scott

*Scenic Charge Artist*

Logan Thomas

*Head Electrician*

Jason Tribby

*Head Scenic Carpenter*

Chris Tschirgi

*Costume Shop Manager*

## FOR THIS PRODUCTION

Ryan Amnya

*Carpenter*

Conor Fortner

*A2*

Max Langley

*Sound Technician*

Olivia Spreen

*Production Assistant*

Kelsey Taylor

*Carpenter/Props Artisan*

# THE 5TH BOARD OF DIRECTORS

Kenny Alhadeff  
*Chair*

Tom Handley\*  
*Treasurer*

Grace Yuan\*  
*Secretary*

Beth Porter  
*Immediate Past Chair*

Ravija Amlani  
Marisa Behnke\*  
Debby Carter  
Randy Hodgins  
Lee Keller  
Patrick F. Kennedy

SaSa Kirkpatrick  
Forrest Kim  
Carmen Mayo\*  
Richard Meadows  
John Payes\*  
Stephen P. Reynolds\*

Bonnie Towne  
Gary Tucci  
Becca Wert  
Bill Wert\*  
Eileen Glasser Wesley

## PAST CHAIRS OF THE BOARD

Beth Porter . . . . . 2022–2024  
Les Biller . . . . . 2021–2022  
Bonnie Towne . . . . . 2018–2021  
Stephen P. Reynolds . . . . . 2015–2018  
Wanda J. Herndon . . . . . 2013–2015  
Barbara L. Crowe . . . . . 2011–2013  
Rob Sexton . . . . . 2009–2011  
Norman B. Rice . . . . . 2007–2009  
Kenny Alhadeff . . . . . 2004–2007  
William W. Krippaehne, Jr. . . . . 2002–2004  
Bruce M. Pym . . . . . 2000–2002

John F. Behnke . . . . . 1998–2000  
Faye Sarkowsky . . . . . 1996–1998  
Donald J. Covey . . . . . 1994–1996  
Kenneth L. Hatch . . . . . 1992–1994  
John D. Mangels . . . . . 1990–1992  
Robert F. Buck . . . . . 1988–1990  
Stanley M. Little, Jr. . . . . 1986–1988  
R. Milton Trafton . . . . . 1983–1986  
W.J. Pennington . . . . . 1981–1983  
D.E. Ned Skinner . . . . . 1979–1981

## BOARD EMERITUS

Linda Anderson\*\*  
Ann Ardizzone  
Clodagh Ash\*\*  
Carl Behnke  
Les Biller  
Robert J. Braun  
Debbie Brown  
Steve Camp  
Barbara L. Crowe  
Gary Fuller

Wanda J. Herndon  
Margaret Inouye  
Bill Krippaehne  
Anna Laszlo  
Mark Levine  
Gary Locke  
Elizabeth Lund  
John Mangels\*\*  
Bill Nichols  
Tom Norwalk

Bruce Pym\*\*  
Ann Ramsay-Jenkins  
Anthony Repanich  
Norman B. Rice  
Faye Sarkowsky  
Rob Sexton  
Emory Thomas Jr.  
Eric Trott  
Tom Walsh\*\*  
Sterling Wilson

*Founding Managing Director*  
Marilynn Sheldon

*Artistic Director Emeritus*  
David Armstrong

*Managing Director Emeritus & Senior Advisor*  
Bernadine C. Griffin

\*Denotes Member of the Executive Committee  
\*\*Deceased

## SENIOR LEADERSHIP TEAM

Bill Berry  
*Executive Director*  
 Ariel Gomez Bradler  
*Senior Director of Culture & Operations*  
 Rachel Robert  
*Senior Director of Finance/CFO*  
 Jay Santos  
*Senior Director of Artistic Programming*  
 Joan Toggenburger  
*Senior Director of Production*  
 Becky Witmer  
*Senior Director of Marketing & Philanthropy*

## ARTISTIC

James A. Rocco  
*Associate Producer*  
 Dedra D. Woods  
*Interim Casting Associate & Artistic Liaison*

## EXECUTIVE & ADMINISTRATION

Chloe Starbird  
*Executive Administrative Associate*

## MARKETING

Isaiah Custer  
*Director of Marketing & Communications*  
 Claire Koleske  
*Associate Director of Marketing & Sales*  
 Ann Reynolds  
*Associate Director of Communications & Media*  
 Dena Winegeart  
*Communications Associate*  
 Simran Kaur  
*Digital Content Specialist*  
 Jadzia Parker  
*Senior Graphic Design Manager*  
 Stephon Dorsey  
*Graphic Design Associate*  
 Lauren Wolbaum  
*Social Media Consultant*

## GUEST SERVICES/TICKETING

Khajha Rogers  
*Associate Director of Guest Services & Ticketing*  
 Morgan Picton  
*Guest Services Manager – Box Office*  
 Chad Biesman  
*Associate Director of Corporate, Groups, & Guest Experience*  
 Amanda Green  
*Guest Services Assistant Manager – Phone Center*  
 Serena Hope Hohenstein  
*Guest Services Assistant Manager – Box Office*  
 Tori Cooper  
*Group Sales & Guest Services Associate*  
 Dana Winter  
*Guest Services Lead – Box Office*  
 Antoinette Lindo, Sarah McDaniel, Rebecca McNeill,  
 Meg Peterson, Lena Pulve, Arwen Wagner  
*Guest Services Associates*

## FRONT OF HOUSE

Valerie Kouldukis  
*Associate Director of Patron Services & Security*  
 Lori Adler, Jen Eatchel, Cassie Hohn, Atlyss Larsen  
*Deputy House Managers*  
 Barbara Burch, Karen Hall, Sarah Hudson, Malia Lapanja, Jane Muxen McCullough  
*Leads*  
 Sally Birks, Nolan Brown, Kathleen Bryant, Elizabeth Campbell, Sarah Castaldo, Frank Chinn, Dayna Cole, Barbie Denend, Hector Eribez, Jensen Ghidella, Nancy Harris, Dyson Kilodavis, Sev Krauss-McClurg, Josephina Labore, Jessica Larsen, Juneaux Lehman, Leah Lusk, Martha Elena Maginnis, Madelyn Marks, Mary McClary, Lillia Nelson, Elaine Romano, Sophie Sen, Riley Stalker, Meadow Swanson, Cami Taliaferro-Barber, Xero Xanadu  
*Head Ushers*  
 Mack McGee  
*Head Security Officer*  
 Jon Deaux, Dean La Roque, Peter Schafer  
*5th Avenue Theatre Security*

## PHILANTHROPY

Kate Speck  
*Director of Philanthropy*  
 Kathleen Maki  
*Director of Corporate & Institutional Partnerships*  
 Desiree Sarapsi  
*Associate Director of Philanthropic Operations*  
 Andy Rowland  
*Individual Giving Manager*  
 Olivia Brent-Fielding  
*Individual Giving Manager*  
 Matthew Bosley  
*Marketing & Philanthropy Coordinator*  
 Taylor Gitlin  
*Corporate Partnerships Coordinator*  
 Kendra Odden  
*Grant Writing Specialist*  
 Emily O'Leary-Wild  
*Philanthropic Operations Assistant*  
 Thea Warner  
*Event Consultant*

## EDUCATION & ENGAGEMENT

Amberlee Joers  
*Director of Education & Engagement*  
 Aviona Rodriguez Brown  
*Associate Director of Engagement*  
 Jessica Ellison  
*Senior Manager of Education & Engagement*  
 Miranda Quintanilla  
*Education & Engagement Coordinator*  
 Beth Pollack  
*Dramaturg & Curriculum Specialist*

## FINANCE

Matt Throckmorton  
*Financial Analyst*  
 Gi Hara  
*Forensic Accountant*  
 Brandi Sweet  
*Payroll Manager*  
 Selby  
*Accountant*



**INFORMATION TECHNOLOGY**

Greg Vermilion  
*Director of IT*  
Douglas Day  
*Systems Administrator*  
Rose Hoek  
*IT Help Desk Associate*

**DATA OPERATIONS**

Maryke VanBeuzekom  
*Director of Data Operations*  
Nichole Mines  
*Associate Director of Data Operations*

**OPERATIONS**

Maggie Wegener  
*Director of Human Resources*  
Alda Shepherd  
*Facilities Manager*  
James Faley  
*Facilities Support*  
Sonnet Stockmar  
*Operations Lead*  
Jessica Severance  
*Operations Support*  
Karen Hall, Carrie Jarvis, Dean LaRoque, Bobby Manuva, Mack McGee, Jessica Severance, Sonnet Stockmar, Paco Ybarra  
*Stage Door Security Staff*

**PRODUCTION**

Ryan Gastelum  
*Director of Production*  
Matthew Carleton  
*Technical Director*  
Shannin Strom  
*Costume, Wardrobe, & Hair Director*  
Mo Chapman  
*Associate Production Manager*  
Kyle Brisby  
*Production Administrator*  
Jacob Palmer  
*Associate Technical Director*  
Robin Logerstedt  
*Production Logistics Coordinator*  
Nicole Ly  
*Artist Services Coordinator*  
Kimberly Rosenberg  
*Music Services Senior Manager*  
Laney Harrison  
*Production Coordinator*

**SETS & RIGGING**

Laurel S. Horton  
*Head Carpenter*  
Benjamin Baird  
*Production Carpenter*  
Kaleb Burbine  
*Assistant Carpenter*  
Nick Lauris  
*Assistant Carpenter/Driver*  
Dave McCawley  
*Head Flyman*  
Scot C. Allison  
*Head Rigger*  
C. Luke Mathis  
*Head Builder*  
Austin Smart  
*Shop Foreman*  
Brian "Chili" Culver  
Lucas McVey  
*Builders*

**LIGHTING**

Pamela Mulkern  
*Head Electrician*  
Sean Callahan  
*Production Electrician*  
Teri Cobourn  
*Assistant Electrician*  
Christina Hughes, John Small  
*Key Electricians*  
Ken Phillips  
*Moving Lights Programmer Electrician*

**SOUND**

Nathan Schilz  
*Head Sound Engineer*  
Evan A. Duckworth  
*Production Sound Engineer*  
Jennifer Lee, James Rudy  
*Assistant Sound Engineers*  
Kurt Conway  
*Swing Sound Engineer*  
Meg Slaughter  
*Key Sound Engineer*

**PROPS**

Catharine Case Lutes  
*Prop Head*  
Tristan E. Hansen  
*Production Prop Head*  
Nat Whitten  
*Prop Assistant*  
Hannah Fenske  
*Prop Artisan*

**SCENIC ART**

Gemma Kealy  
*Charge Artist*

**COSTUMES**

Christopher Moad  
*Costume Shop Floor Manager*  
Carrie Rees Johnson  
*Costume & Wardrobe Assistant*  
Shellie Moomey  
*Draper*  
Elizabeth Titus Baker  
*Cutter/Tailor*  
Jeanna Gomez  
*Head Crafts*  
Ruthanne Swanson  
*Tailor/Draper*  
Teresa O'Leary, Kay Wiley  
*First Hands*

**HAIR & MAKE-UP**

Jason Goldsberry  
*Head Hair & Makeup*  
Juliette Lewis  
*Assistant Hair & Makeup*

**WARDROBE**

Sarah Jarrell Wade  
*Wardrobe Head*  
Jim Westerland  
*Assistant Wardrobe*  
Mica Pointer  
*Lead Dresser*

**SPECIAL THANKS**

Ascii Interactive • Evergreen Fire and Safety • JTM Construction • Nyhus Communications • PSR Mechanical • Rainier Building Services • Titan Electric • The University of Washington • Venture General Contracting, LLC

# SEATTLE OPERA.

## THE MAGIC FLUTE

feb. 22–mar. 9, 2025



### MYTH, MAGIC, & MOZART.

Enter the whimsical world of Mozart with the beautiful Pamina, Prince Tamino, the bird catcher Papageno, the vengeful Queen of the Night, and many more. All ends well in this beloved audience favorite featuring seamless interaction between onstage performers and animated visuals. Inspired by silent movies, don't miss this colorful and energetic production that has received standing ovations around the world.

**MCCAW HALL**  
**206.389.7676**  
**SEATTLEOPERA.ORG/FLUTE**

**Principal Singer Season Sponsor:**  
Joan Watjen—in memory of Craig M. Watjen

**Production Sponsors:**  
National Endowment for the Arts

Port   
of Seattle